

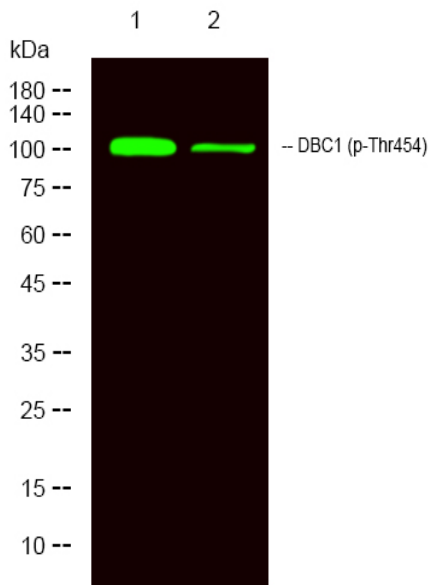


DBC1 (phospho-Thr454) rabbit pAb

Catalog No	YP-Ab-00271
Isotype	IgG
Reactivity	Human;Rat;Mouse;
Applications	WB
Gene Name	KIAA1967 DBC1
Protein Name	DBC1 (Thr454)
Immunogen	Synthesized phosho peptide around human DBC1 (Thr454)
Specificity	This antibody detects endogenous levels of Human DBC1 (phospho-Thr454)
Formulation	Liquid in PBS containing 50% glycerol, 0.5% BSA and 0.02% sodium azide.
Source	Polyclonal, Rabbit,IgG
Purification	The antibody was affinity-purified from rabbit serum by affinity-chromatography using specific immunogen.
Dilution	WB 1:1000-2000
Concentration	1 mg/ml
Purity	≥90%
Storage Stability	-20°C/1 year
Synonyms	DBIRD complex subunit KIAA1967 (Deleted in breast cancer gene 1 protein) (DBC-1) (DBC.1) (p30 DBC)
Observed Band	105kD
Cell Pathway	Nucleus . Cytoplasm . Cytoplasm, cytoskeleton, spindle . Recruited to chromatin, post-UV irradiation. Sequestered to the cytoplasm in the presence of MCC. Translocated to the cytoplasm during UV-induced apoptosis. .
Tissue Specificity	Expressed in gastric carcinoma tissue and the expression gradually increases with the progression of the carcinoma (at protein level). Expressed ubiquitously in normal tissues. Expressed in 84 to 100% of neoplastic breast, lung, and colon tissues.
Function	tissue specificity:Expressed ubiquitously in normal tissues. Expressed in 84 to 100% of neoplastic breast, lung, and colon tissues.,
Background	
matters needing attention	Avoid repeated freezing and thawing!
Usage suggestions	This product can be used in immunological reaction related experiments. For more information, please consult technical personnel.



Products Images



Western Blot analysis of 1 MCF-7 treated with LPS, 2 MCF7,using primary antibody at 1:1000 dilution. Secondary antibody(catalog#:RS23920) was diluted at 1:10000